



PRESS RELEASE

August, 2018
The COURT Co., Ltd.

Be Yourself Again with the Healing Powers of Kumejima The Kumejima EEF Beach Hotel announces its new Bar & Lounge, Fitness Center, and the Healing Island Package offer

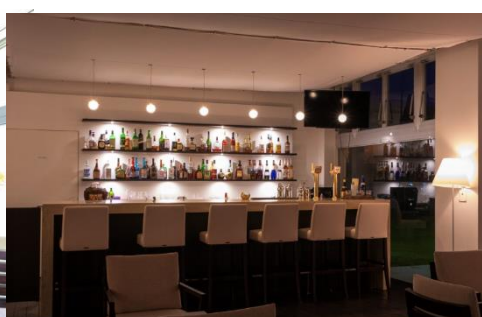
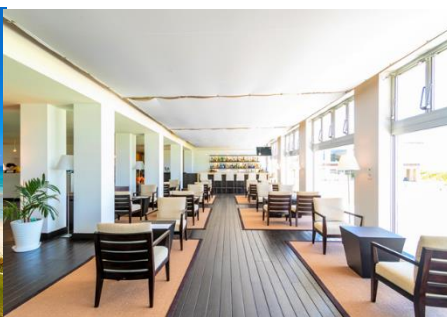
The COURT Co., Ltd. is happy to announce the renewal of the Bar & Lounge and the opening of the Fitness Center at their Kumejima EEF Beach Hotel.

The Kumejima EEF Beach Hotel is the only hotel on the beach in Kumejima, the island approximately 100 km west of Okinawa Main Island. Our guests love the location which makes our hotel the perfect spot for fishing, diving, and tours including Hatenohama Beach.

The theme for this renewal is: Be yourself again with the healing powers of Kumejima. Since the Ryukyu Dynasty, Kumejima has always been known as the “most beautiful island in Ryukyu.” Kumejima was a trading hub, hosting many guests from mainland Japan and foreign countries. We are continuing this tradition by helping our guests energize both body and soul through experiencing Kumejima’s nature, heritage, culture, cuisine, and getting to know the local islanders.

Theme	Be yourself again with the healing powers of Kumejima		
Experience	Local people, nature, heritage, culture	Healthy foods from Kumejima and Okinawa	Relaxation only available at Eef Beach Hotel

- **Bar & Lounge YUKURU:** Unwind before or after dinner. Taste our mojito with herbs grown on the premises, or try a sampler of awamori with shots from the two major distilleries on the island.
- **Fitness Center:** Newly opened in July 2018, work out with a broad range of machines such as treadmills, stationary bike, recumbent bike, stretching space, etc.
- **Healing Island Package:** a blessing for the body and soul, this is a special 2-night package rich with the healing powers only found on Kumejima.





Bar & Lounge YUKURU*

Take in the emerald green ocean during the day, or the moonlit waves at night at the Bar & Lounge YUKURU which faces Eef Beach. With new furniture and lighting, the space is a peaceful haven. During bar hours, enjoy drinks such as original cocktails and mojitos made with fresh herbs. We are also very proud of our Chef's food menu. On café hours, Okinawa-style afternoon tea sets and sweets are available. Feel the spirit of Eef beach as you relax at YUKURU.

**Yukuru*: to take a break, to relax, in Okinawan dialect

Drinks:

- Mojito, with herbs grown on the premises
- The Awamori Sampler, with awamori from the two largest distilleries in Kumejima

Other drinks are also available.

Foods:

- Japanese Tiger Prawn dishes (Kumejima is the largest Japanese Tiger Prawn producer in Japan)
- Nibbles with deep-sea water sea weeds such as sea grapes and mozuku
- Sweets: Chef's original brown cane sugar mousse and puddings

Other items are also available.

- Hours: Café Time 9:00-21:00 Bar Time 21:00-24:00 (last order for foods 23:00)
- Seats: 24 at tables, 6 at the counter



Sanji-ja Set (Afternoon Tea Set)

Enjoy local snacks such as the Okinawan donut, crêpe, and Okinawan scallion pickles, etc.

Kumejima Vegetable Salad

A salad made from vegetables produced on the island, with green papayas, island carrots and coastal hog fennel.

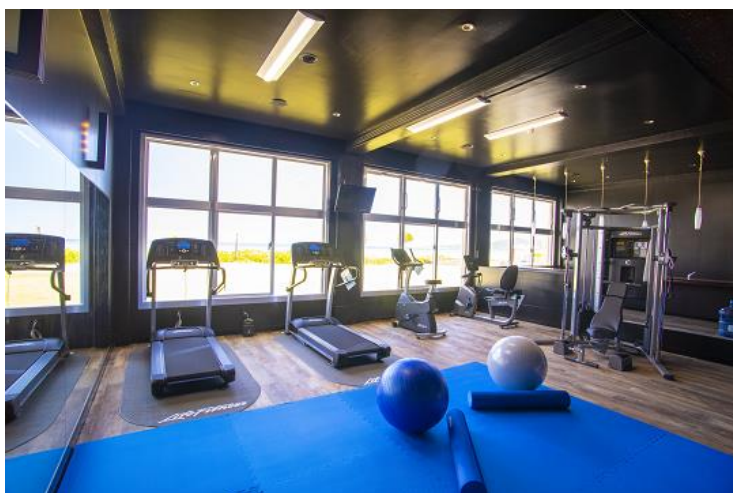
These nibbles are perfect with awamori: Kumejima's mozuku, cooked coastal hog fennel, and sea grapes cultured in deep ocean water (Kumejima is the largest sea grape producer in Japan).



Eef Fitness Room

Due to popular demand, we opened a fitness center where you can work out while feeling the ocean. The gym has two treadmills, a stationary bike, a recumbent bike, a training machine, as well as yoga mats, foam rollers and stability balls. Two can do stretches in the stretch space. Now you can stay in shape even when bad weather keeps you indoors.

- Hours: 7:00-22:00
- Must be 16 or older
- Fee: Free for guests (please make reservations at the front desk, due to limited capacity)



Training Machine

A highly adjustable machine with various cable motions.



Treadmill

Walk, jog or run on this easy-to-use machine.



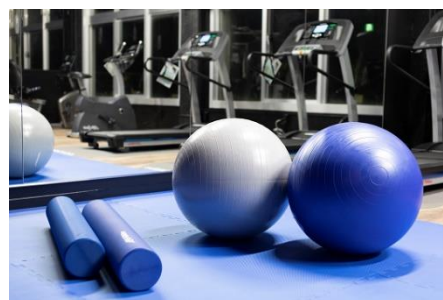
Stationary Bike

A standard upright bike, as easy as riding a bicycle.



Recumbent Bike

A seat-type, cycling workout machine with back support. Perfect for people who are new to machine workouts.



Foam Rollers and Stability Balls



Savor the healing powers of the island: the Healing Island Package

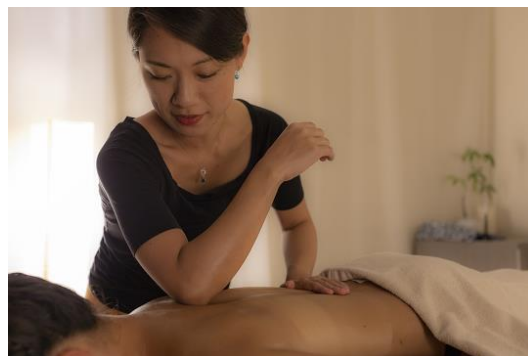
<https://www.courthotels.co.jp/kumejima/stayplan/>

The Healing Island Package captures all the healing powers that Kumejima has to offer, in a two-night plan which includes breakfast and dinner. Experience the Kumejima EEF Beach Hotel Concept of “Be yourself again with the healing powers of Kumejima” first hand. A hotel limousine will pick you up at the airport and will bring you to the hotel, pointing out major sights along the way. Enjoy some tea at the lounge while we walk you through your package. Once you check in, feel yourself returning to the true you with *Nuchigusui* (Medicine of Life) Course Dinners made with abundant Kumejima foods, and luscious spa treatments. Optional tours to fully immerse in Kumejima include Hatenuhama Beach tours, awamori distillery tours, and weaving your own coaster at the Kumejima Tsumugi Yuimaaru Pavillion.

- Spa Treatments
 - ✧ Detox Footbath with Shell Ginger and Kumejima Salt
 - ✧ Nature Healing Treatment: a hot-stone treatment using andesite from the island
- Dinner Menu

Enjoy a Japanese or Western version of the *Nuchigusui* (Medicine of Life) Course, rich with foods of the island such as sea grapes, fennel and mozuku.

The Healing Island Package	(April-June, Sept.-Dec. 2018)
Suite Rooms	2 persons/room ¥68,000 per person (2 Breakfasts and Dinners incl.)
Junior Suite Rooms	2 persons/room ¥58,000 per person (2 Breakfasts and Dinners incl.)





Facilities and Services

Name:	Kumejima EEF Beach Hotel		
Rooms:	79		
Concept:	Be yourself again with the healing powers of Kumejima		
Newly Refurbished:	Lounge & Bar Kyusui		
Price:	Standard Twin	2 persons/room, from ¥6,000 per person	
	Deluxe Twin	2 persons/room, from ¥7,000 per person (accommodates up to 4)	
	Junior Suite	2 persons/room, from ¥16,500 per person (accommodates up to 4)	
	Suite	2 persons/room, from ¥23,000 per person (accommodates up to 4)	
Manager:	Kenichi China		
Address:	548 Janado, Kumejima-cho Shimajiri-gun, Okinawa		
Access:	25 minutes by car from Kumejima Airport,		
	15 minutes by car from the Ferry Port		
Features:	Wi-Fi available in all rooms		

Guest Rooms



Suite A (3rd Floor)

The rooms look out onto Eef Beach, and are spacious at 60 square meters; even the beds are wide at 140cm. Non Smoking.



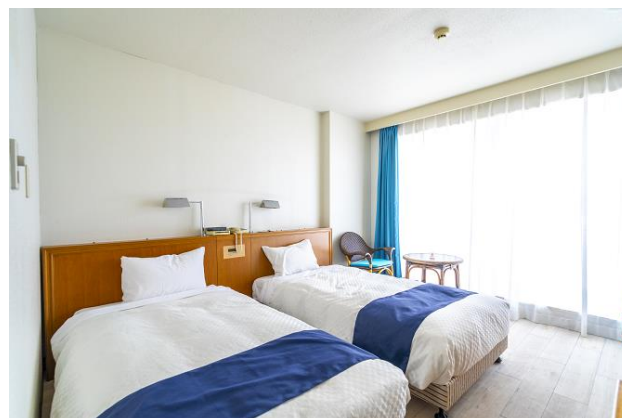
Junior Suite A (3rd Floor)

With an ocean view, these are spacious twin rooms at 45 square meters. Non-smoking.



Deluxe Twin

Overlooking Eef Beach, these twin rooms are 30 square meters large and can accommodate up to 4 guests. Can be used for families. Smoking/non-smoking.



Standard Twin

With a garden view and 20 square meters large, these rooms are compact and efficient, perfect for business use or for divers. All rooms are non-smoking.



Contact

Name:	Kumejima EEF Beach Hotel	Address:	548 Janado, Kumejima-cho Shimajiri-gun, Okinawa
TEL:	098-985-7111 (24 Hrs)	URL:	www.courthotels.co.jp/kumejima
		Facebook:	@kumejimaef
	Manager: Kenichi China	Email:	kenichi.china@courthotels.co.jp

About Us - The COURT Co., Ltd.

The Court Co., Ltd. is a team of professionals in hotel management, running 16 hotels across Japan, from Hokkaido to Okinawa. Our guiding principle is “Energize our guests!” and we are aiming to create a unique hotel (or, a brand) in each location which goes beyond the generic lodging facility.

Name:	The COURT Co., Ltd.
Established:	February 22 nd , 1984
Head Office:	2-16-9 Higashi, Shibuya City, Tokyo
Representative Director:	Yoko Tanigaki
Employees:	330
Total Rooms:	1,869
Homepage:	www.courthotels.co.jp