



PRESS RELEASE

The COURT Co., Ltd.

FUJISAWA HOTEL EN

The first vacation hotel in the Shonan area

Fujisawa City, July 17th, 2018

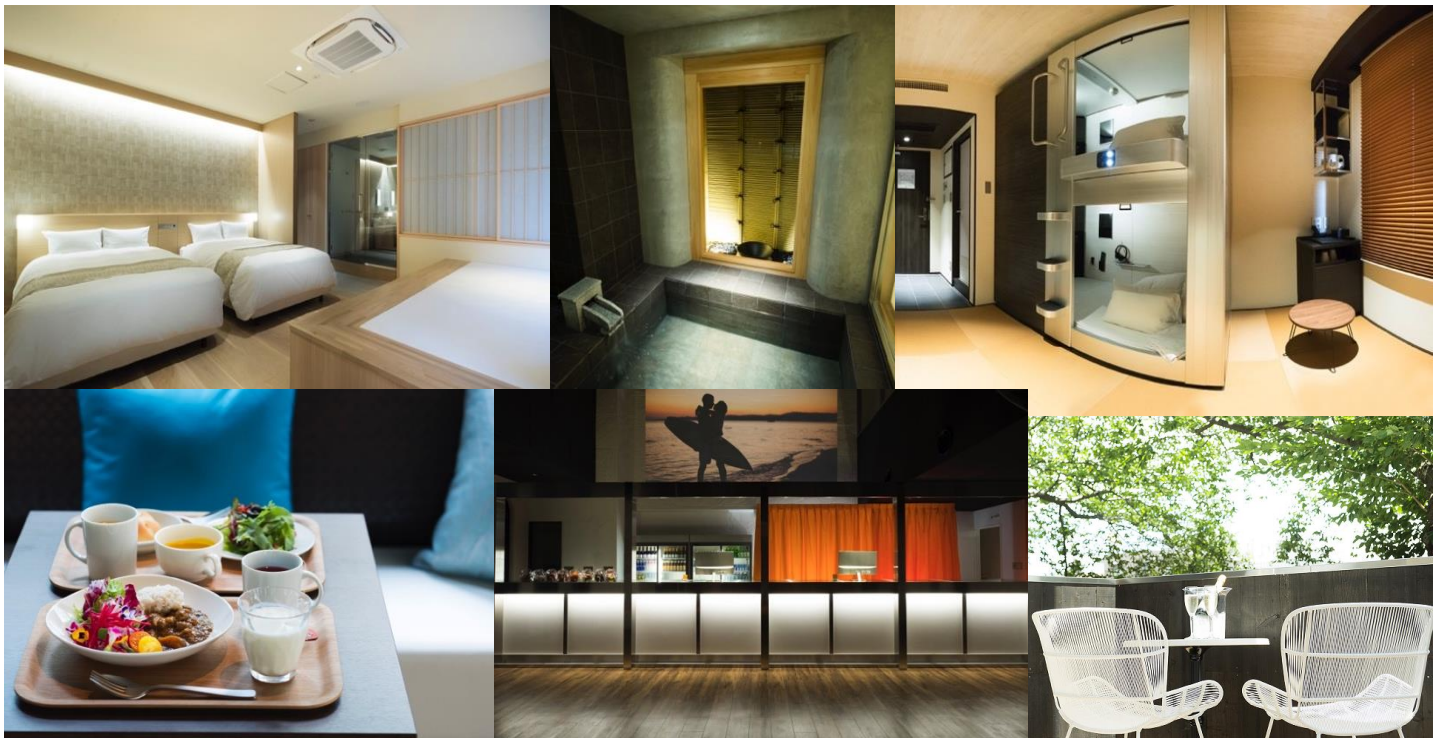
The COURT Co., Ltd. proudly announces the July 17th, 2018 opening of FUJISAWA HOTEL EN, after fully refurbishing the previous Fujisawa Hotel, welcoming guests to a new experience in Shonan-Fujisawa.

The Shonan-Fujisawa area has fascinating sights for tourists while being easily accessible from metropolitan Tokyo. It is a bubbling region with strong future potential: new spots such as the commercial complex Shonan T-SITE (2014), and the Fujisawa Main City Hall Building (January 2018) add color to the area, while Enoshima prepares itself as the Official Sailing Venue of the 2020 Tokyo Olympic/Paralympic games. At the same time, Fujisawa is also the first stop for local sights, where the picturesque Enoshima Electric Railway starts and beaches and temples of Kamakura await beyond. While many tourists visit throughout the year, the lack of tourism/resort hotels have forced them to limit their stay to hurried day-trips; opportunities are robust for lodgings and extended stays.

The concept for FUJISAWA HOTEL EN is: The Vacation Hotel. We are here for the traveler who wants the full Shonan experience, a hotel where guests can effortlessly stop by and enjoy the relaxation and freedom in an atmosphere where even time seems to pass at a leisurely pace. Our rooms are unique, to make sure diverse guests--couples, friends, ladies' night-out trips and larger groups on holidays--can enjoy. Room types include those you would expect in prestigious spa-area ryokans with semi-open baths and luxurious spa spaces, to rooms with capsule hotel-like pods offering more privacy.

"EN-joy your vacation!" is how we greet guests when they check in and receive their keys. Various welcome drinks await them at the Lobby & Lounge area. Elevators, halls, and rooms have a calming Japanese ambiance. Each room has a space for guests to take their shoes off, to soothe tired feet after a day's sightseeing. At night, the Lounge turns into a self-service bar where guests can enjoy craft beer from the Shonan area, sparkling wine, even snacks the Japanese used to enjoy as kids, in a candle-lit setting. The music and videos are selected to sweep guests away from the daily grind. Come morning, the same space turns into a sun-filled restaurant with a wooden deck, where the Soup & Salad Bar serves healthy and beauty-conscious breakfasts using locally grown produce.

We hope FUJISAWA HOTEL EN will be the vacation hotel where guests who fall in love with Shonan will return to, and stay for one more night.



Contacts and Reservations, Facts for Press Use

Name: FUJISAWA HOTEL EN
Address: 12-9 Minami Fujisawa, Fujisawa City, Kanagawa Prefecture
TEL: 0466-28-8000 (24 hours) URL: <https://www.fujisawahotelen.jp>
SNS: Facebook: @fujisawahotelen / Instagram: fujisawahotelen

Facilities and Services

Name: FUJISAWA HOTEL EN
Rooms: 60 Rooms (All Rooms are Non-Smoking Rooms)
15:00 Check-in, 11:00 Check-out
Capacity: 130 persons
General Manager: Hiroki Tanaka
Phone Number: From Japan: 0466-28-8000 Int'l: +81-466-28-8000
Address: 12-9 Minami Fujisawa, Fujisawa City,
Kanagawa Prefecture, 215-0055
Access: A 9-minute walk from Fujisawa Station
(JR, Odakyu, and Enoshima Railways)
Parking: None (Coin-operated parking available nearby)
Concept: The Vacation Hotel
Services: Lobby Lounge (1F), Restaurant (seats 28) and Wooden Deck (6) (1F)
Drinks, snacks, sundries available at the Front Desk (1st Floor)
Facilities: Free Wi-Fi
Slumberland Beds from the UK in all rooms
40-inch TV, telephone, tea-making facility, refrigerator, hair dryer, body soap,
shampoo & conditioner, toothbrush set, shaving razor, hairbrush, face and bath
towels, slippers
In-room wear, bathrobe and yukata (in selected rooms)



About Hotel EN

FUJISAWA HOTEL EN is the second EN brand hotel operated by The COURT Co., Ltd. Our first EN hotel, the SHIBUYA HOTEL EN opened on February 2016 under the concept of "Something Happens!?" SHIBUYA HOTEL EN is a designer hotel that comfortably guides guests from the vibrancy of the Shibuya streets to the tranquility of the guest rooms. Modernized Japanese motifs and themes such as traditions and culture, coexistence with nature, and prestige can be seen in the halls and guest rooms. www.shibuyahotel.jp/

FUJISAWA HOTEL EN carries on the EN brand, with calming Japanese designs in the garden, semi-open air baths, and modern rooms applying classical styles. The yellow-orange logo captures the warm sunlight that shines upon the beaches of Shonan. The Yin-Yang philosophy intrinsic among the Japanese serves as the backdrop to the architectural designs in FUJISAWA HOTEL EN, while furnishings offer the warmth of light.

Treat Your Five Senses to Shonan: The Lobby and Lounge Spaces

The Lobby and Front Desk

The large screen in the atrium displays content that enables guests to escape the mundane, from sunset to sunrise. Beverages such as local craft beers, sparkling wines, and Shonan Juice can be purchased here, as well as familiar snacks, savories, and sweets.

Here, the Shonan Concierge Service offers help in restaurant choices/reservations, sightseeing tips, arranging birthday cakes, and so on to ensure our guests' trips are even more perfect.



Restaurant & Lounge

The lounge fills with sunlight in the mornings, and the wooden deck offers a wonderful view of Sakai River and seasonal flowers such as cherry blossoms and hydrangea. Warm and cold welcome drinks are prepared every day. Bossa nova plays in the background during the day, while at night this space becomes a self-service bar with soothing jazz or classical music.

Hearty breakfasts can be enjoyed until checkout (11:00 AM). The Soup & Salad Bar offers a wide selection of healthy, beauty-conscious foods made from locally sourced produce, such as salads, soups and freshly baked bread. Or, try the aromatic EN Original Curry made with fruits and served with rolled barley rice. *Breakfast: 1,200 JPY (pre-tax)

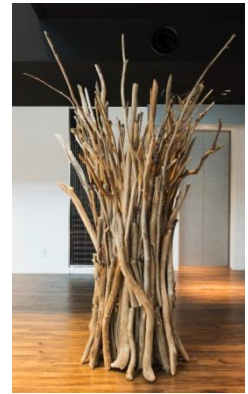
(EN asks guests to refrain from working in the Lounge, so all guests can fully enjoy their vacation.)



The Statue in the Entrance Lobby

A 2 meters-tall art piece made from driftwoods greets our guests in the entrance lobby.

Driftwoods are also travelers, reaching our shores after a long journey across the sea. The work captures our wish for FUJISAWA HOTEL EN to become the light that guides and connects many travelers, and a place where each traveler can spend their vacation in their own way. Feel free to take photos with this symbol of travels in Shonan.



○ Guest Rooms

Room in Bath Twin with Spa Space

Feel the breeze as you dip into the semi-open air bath attached to this room. Lie down in the Spa Space and be whisked away to an onsen hot spa experience. This room has two double beds, and futons can also be laid out on the Spa Space. A great room for couples, larger families, and friends. In-room esthetic/facial services are available to help unwind from your trip.



Room in Bath Twin

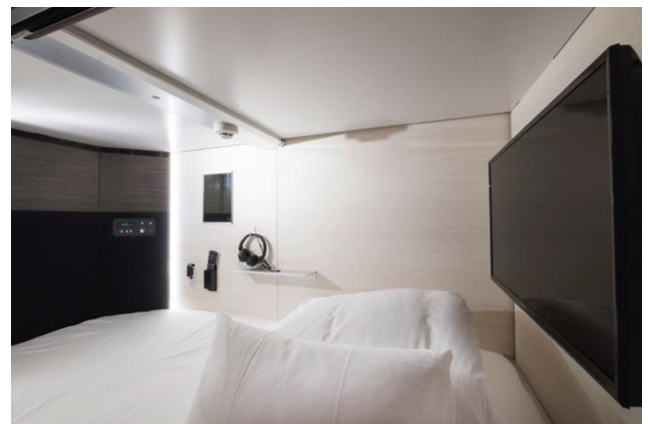
Two spacious double beds are placed in a cheerful, modern setting. Please do enjoy a morning bath in the sunny, semi-open air bath.

In-room esthetic/facial services are available to help unwind from your trip.



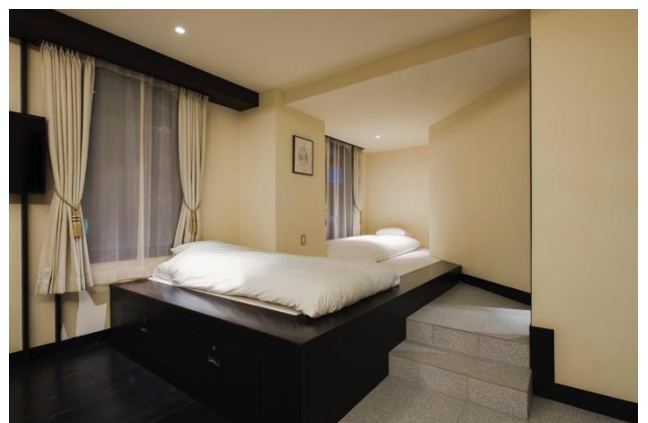
Room in Capsule Twin

A capsule hotel within a hotel room? Why not? The room is not a twin or a double, but presents a new way of enjoying your stay. Each capsule is equipped with its own 32-inch TV, side table, cup holder, and an electrical outlet, giving the pod a first-class cabin or a secret hideout feel. This room type offers new delights to various guests: small families can finally experience capsule hotels safely and comfortably, girlfriends on a Ladies' Trip can appreciate the privacy, and gamers can have a blast with an off-line sleepover. Futons can be laid out on the tatami space, accommodating up to three people.



“EN” Suite with Spa Space

This is the largest room in our hotel, with two spacious double beds. Futons can be laid out on the Spa Space, making this a great room for families and a group of friends.



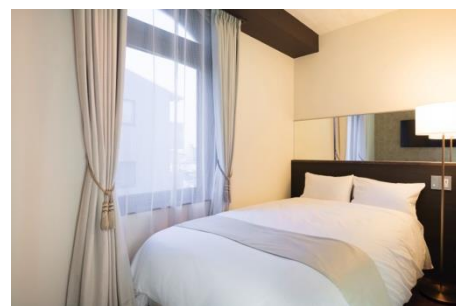
Japanese Modern Luxury Twin

Traditional Japanese architectural motifs with a modern and tranquil twist. Rooms are relaxing, with separate bath and toilet, perfect for couples or friends on an outing.



Japanese Modern Queen / Japanese Modern Double / Japanese Modern Semi-Double

Experience a western-style mansion of Kamakura in these rooms. Two-person guests can choose between luxurious queen and double beds; single travelers also have a choice of semi-double beds.



○ Rates

● Room in Bath Twin	36.3 m ²	56,000 JPY
● Room in Bath Twin with Spa space	43.7 m ²	58,000 JPY
● "EN" Suite with Spa space	47.6 m ²	58,000 JPY
● Japanese Modern Luxury Twin	28.4 m ²	34,000 JPY
● Room in Capsule Twin	15.4 m ²	20,000 JPY
● Japanese Modern Queen	17.3 m ²	28,000 JPY
● Japanese Modern Double	15.4 m ²	24,000 JPY
● Japanese Modern Semi-Double	14.4 m ²	20,000 JPY

※Above rates are for one room, two guests, per night. (incl. VAT)

About Us - The COURT Co., Ltd.

The Court Co., Ltd. is a team of professionals in hotel management, running 16 hotels across Japan, from Hokkaido to Okinawa. Our guiding principle is "Energize our guests!" and we are aiming to create a unique hotel (or, a brand) in each location which goes beyond the generic lodging facility.

Name:	The COURT Co., Ltd.
Established:	February 22 nd , 1984
Head Office:	2-16-9 Higashi, Shibuya City, Tokyo
Representative Director:	Yoko Tanigaki
Employees:	330
Total Rooms:	1,869
Homepage:	www.courthotels.co.jp